

CONSISTENT, PREDICTABLE SMILE DESIGN AT MASTER DENTAL SOLUTION

Master dental solution **Veneers** have restored or enhanced many famous smiles and are renowned for their natural lifelike appearance. The transformations achieved for many patients have been truly life-changing.

Our all ceramic Veneers and crowns are handcrafted by our expert LVI trained technicians. The latest pressed and CAD-CAM technology combined with artistic ceramic layering techniques create the beauty and strength for which our restorations are known.

Our Smile Design services are the most comprehensive in Canada and include: Cosmetic Imaging, Treatment Planning, Diagnostic Waxing, Preparation Guides, Temporary Stents and a complete range of the finest aesthetic restorations.

All ceramic restorations;

1) IPS EMAX

Whether your framework is pressed from their new ingots, or scanned, designed and then cut from the milling machine, the universal eMAX ceramic veneering porcelain allows Master Dental Solution to control shade and light reflectance more accurately. Give patients the beauty - functionality of "one smile chemistry" -- prescribe EMAX today at Master Dental Solution. Ivoclar's IPS e.max enables the dentist to restore their patient's smile with a bonded material for incomparable durability and metal-free esthetics.



2) Nobel Procera

Procera® is a high strength all-ceramic restoration that combines translucent, metal-free esthetics with increased flexural strength, biocompatibility and precision fit by CAD/CAM design.





3) 3M LAVA

Master Dental Solution is proud to offer the Lava™ system by 3M™ ESPETM which offers the highest strength all-ceramic metal-free restorations to the dental industry.

The new zirconia-based system combines CAD/CAM technology with an extraordinarily translucent zirconia framework that can be custom colored creating a restoration strong enough for long span bridges, with outstanding fit and biocompatibility and the esthetics your patients have come to expect.



4) 3D Full contour Zirconia crown

The best 'high translucency' zirconia (it is a german zirconia) and the best shading process, implementing new refined presintered staining techniques.

The result: a biocompatible, esthetic and completely chip-resistant restoration; the affordable and esthetic alternative to full cast crowns!

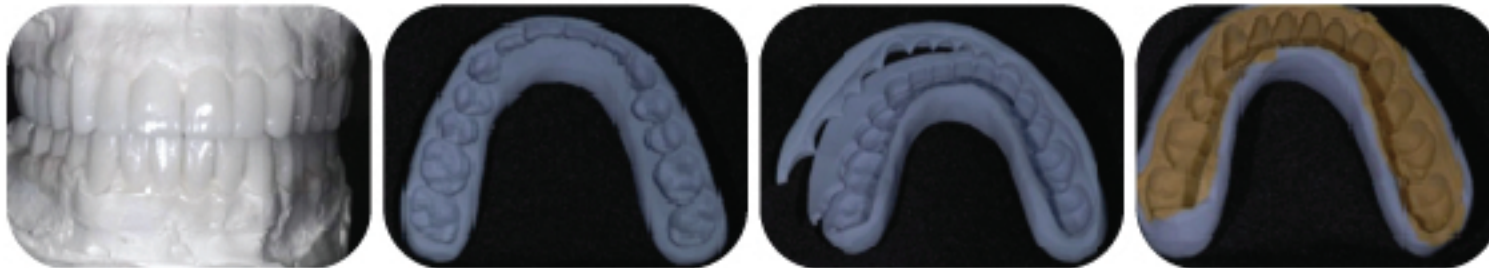
Our 3D ZirCrown was Approved as a Class 3 Medical Device for use in Canada - one of the very few.

CASE PLANNING

1) Diagnostic Wax up

For consistent, predictable results, you just can't beat a diagnostic wax-up. Our LVI trained team of diagnostic wax technicians sell the case to your patient for you! Remember to include a study model of the temps you made from the wax-up so we can double check prior to fabricating the final prosthesis.

Master Dental Solution dedicated Diagnostic Team gives you the blueprint to follow for stress-free results. Our technical advisors can recommend the ideal product, preparation design and cementation medium to use for each unique case.



2) Communication

■ Information for Lab

- Length of centrals
- Gingival contours
- Materials decisions
- All ceramic
- Metal ceramic
- Shade of prepared teeth(stump shade)
- Models of approved temporaries
- Photographs
- Shade of final restorations
- Age,Complexion,Hair,Sex
- Surface of texture
- Incisal edge Translucency
- Shade& Amount
- Younger or Older

LVI SMILE DESIGN

1) Lower anatomical Orthotic



Our LVI trained Neuromuscular technician creates anatomical lower orthotic. These appliances can only be fabricated by properly trained dental technicians who understand these simple, scientific, and proven biophysiologic concepts.

2) LVI Smile Design

Our LVI Smile Design trained Technician using diagnostic wax-ups we create a case plan utilizing the Smile Design evaluation. This technique provides the patient with a restoration based on aesthetics and the 10 basic rules of smile design.

1. Size Proportion of Centrals
2. Golden Proportion
3. Midline and Arch Alignment
4. Inclination - Axial
5. Lip Line vs. Incisal Edge
6. Contact Points
7. Arch Form
8. Gradation
9. Gingival Symmetry
10. Gingival Contour/Zenith

